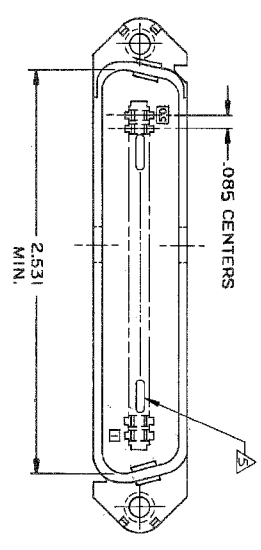
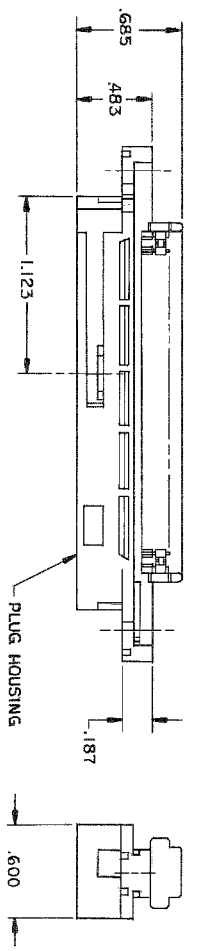
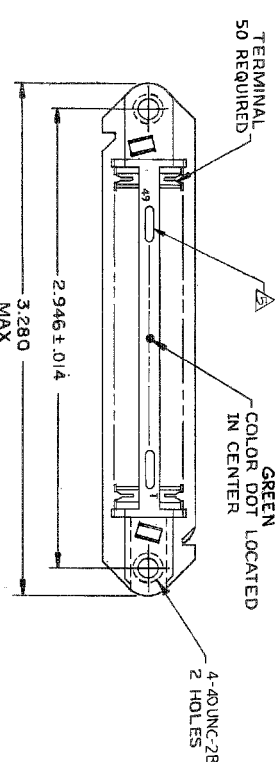


REVOLUTIONS		DATE	BY
GP	00		
P		3/24/07	ZWRW/LM

4 3 2 1



1. THE CONTACT SURFACES OF THE TERMINALS ARE COATED WITH LUBRICANT.
2. ALL DIMENSIONS SHOWN ARE FOR REFERENCE ONLY UNLESS OTHERWISE SPECIFIED.
3. MATERIAL:
 - HOUSING - THERMOPLASTIC (BLACK)
 - TERMINALS - HIGH STRENGTH COPPER ALLOY PLATED WITH .000030 MIN GOLD, OR GOLD FLASH OVER .000030 MIN PALLADIUM NICKEL, ON CONTACT MATING SURFACE. .000050 MIN NICKEL UNDERPLATE OVER ENTIRE TERMINAL.
4. WIRE SIZE: 22 AWG SOLID OR 22 AWG 7 STRANDS OF COPPER CONDUCTORS. MAX INSULATION DIAMETER OF .045 IS ACCEPTABLE FOR MOST APPLICATIONS.

△ CORING MAY OR MAY NOT APPEAR AND IS AT THE DISCRETION OF TYCO ELECTRONICS.

THIS DRAWING IS A CONTROLLED DOCUMENT:		DATE		REVISIONS	
DRAWINGS		GP	00	DATE	BY
DIMENSIONS		P		3/24/07	ZWRW/LM
REFERENCES		REVISED FOR ESD-88-008253			
APPROVALS		APPROVALS			
DESIGNER		DRAWN			
CHECKER		DATE			
CUSTOMER DRAWING		SCALE			

QTM RICHARD W. SIEFER 1-10-06
 V.P. SLACK 1-11-06
 TYCO Electronics Corporation
 Harrisburg, PA 17105-5088

DESCRIPTION: BLACK 552173--1
 PART NO: 552173

PLUG ASSY, 50 POSITIONS, C SLOT
 W/ 4-40 HOLES, CHAMP-LOK

STF T DCF DCF (PENDING)
 A2100779 ©=552173

SCALE: NTS SHEET 1 OF 1 REV P